

Wi-OLC System[®]

Wireless Outdoor Lighting Control System

BE GREEN

Energy Savings

Typical payback from Energy Savings in less than 18 months.

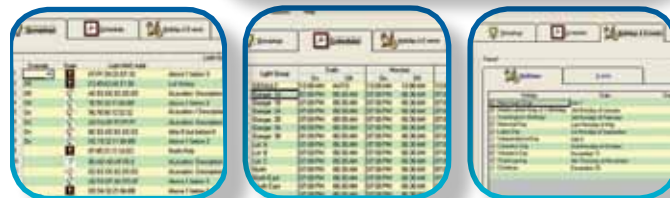
Designed for ZigBee



Ultimate Control Flexibility

- Preprogrammed **Lighting Control Communications Modules (LCCM)** replace regular twistlock controls and automatically form a self-healing multi-hop 802.15.4 mesh communications network
- Setting PC Based **Sky Control Scheduler Software** for lighting Groups is Easily Accomplished without Training
- The Wi-OLC can be used to **turn off** a percentage of **lights** that are controlled by a contactor/timer at a time when full lighting is not required.
- Helps to **Slow Global Warming**, Reduces Greenhouse Gases, Reduces Dependence on Foreign Oil, Calculated Reduction in CO₂ Gas Emission

System Overview – Individual or groups of lights are controlled by twistlock LCCMs. The LCCMs come pre-programmed with **Sky Control Network Software**. A communications base station and **Sky Control Scheduler Software** are easily installed into a standard PC that makes a wireless connection to the Wi-OLC network. When installed on the lights, LCCMs automatically form a self healing multi-hopping mesh communication network. The network automatically communicates wirelessly to the PC Base Station.



Allows users to **configure groupings** and **control schedules**.

Lighting Control – The base station computer with **Sky Control Scheduler Software** easily allows individual light or lighting group settings for 24 hour, 7 day, or 365 day (includes holidays or special events) operation. Available setting includes dusk, dawn, or time settings. An "All On" feature can be used to check light/fixture operation in daytime hours.

Cost & Convenience Benefits – Outdoor lighting consumes a significant amount of fossil fuels. Turning lights off when not needed is good for the environment. Electricity cost savings is easily calculated – typical payback in less than 18 months. CO₂ gas emission prevention is easily calculated. Organizations can easily eliminate the perception of being wasteful and bad for the environment by not leaving unneeded lights on all night.

FP Outdoor Lighting Controls[®]
Quality Electrical Products

 **Sun - Tech**
Sunrise Technologies, Inc.

508-821-1597

54 Commercial Street | Raynham, MA USA 02767 | www.fpolec.com

Wi-OLC System[®]

Wireless Outdoor Lighting Control System

SPECIFICATIONS



Lighting Control Communications Module (LCCM) and Sky Control Network Software & Licenses

General Description:

LCCMs install in standard locking type, three prong NEMA twistlock receptacles. If no receptacle is on the light, an inexpensive receptacle can be easily installed on the light as a retrofit. The LCCMs are preprogrammed with **Sky Control Network Software** and form the Wi-OLC communications network automatically when energized on the light.

SPECIFICATIONS:

Operating Voltage: 105-305 VAC, 50/60 Hz

Load Rating: 1000 Watt tungsten, 1800 VA

Life at rated load: 5,000 Operations (13.7 Years)

Power Consumption: 1.0 watts average @ 120 VAC

Transmit Power: 100 MW

Receive Sensitivity: -95 dBm

Data Rate: 250 kbps

Standard Surge Protections:

320 Joule (13,000 Amps) MOV

Operating Light Levels:

1.5 fc +/- 0.1 fc.

1:1.5 Average turn-on to turn-off ratio

Photosensor:

Encapsulated phototransistor (upward facing)

Dielectric Strength:

2500 Volts between any current carrying parts

Ambient Temperature Range:

-40° to +70°C (-40°F to +158°F)

Moisture Resistance: 95% RH

FCC: Tested and certified



Wi-OLC Base Station and Sky Control Scheduler Software

General Description:

Sky Control Scheduler Software is easily installed on a standard PC with the Windows operating system. A USB base station plugs into the PC making a wireless connection with the Wi-OLC network of lights. The scheduler includes self-explanatory settings for on/off at dawn, dusk, or time of night.



Control Panel Software Minimum Requirements:

Windows based 2000, XP, or Vista PC (not provided), USB or RS485 communication port and CD-ROM drive.

Wi-OLC SYSTEM MODEL NUMBERS:

WI-OLC-xx Standard Smokey Gray Cover

WI-OLC-xx-B Smokey Brown Cover

xx = Number of Lighting Control Communications Modules

The Wi-OLC system includes LCCMs preprogrammed with Sky Control Network Software and licenses, a CD with LCCM serial numbers, a USB Base Station, and a CD with Sky Control Scheduler Software and licenses.

LCCM Lighting Control Communications Module
Standard Smokey Gray Cover

LCCM-B Lighting Control Communications Module
Smokey Brown Cover

ORDERING INFORMATION:

Contact factory: 508-821-1597